

PRODUCT DATASHEET

Nerola Wall-hung toilet

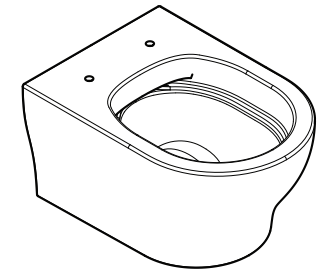
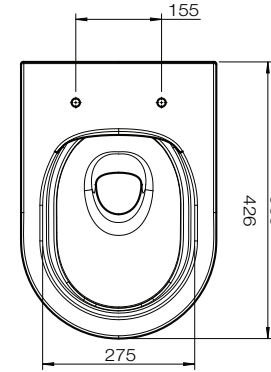
tissino

Designed to Inspire
Made to Experience



A sleek and minimalist wall hung toilet set, available with a range of coloured fittings.

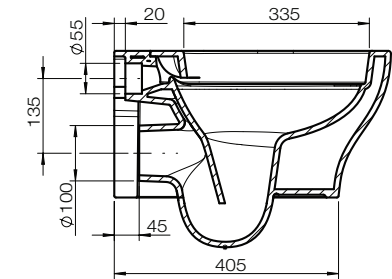
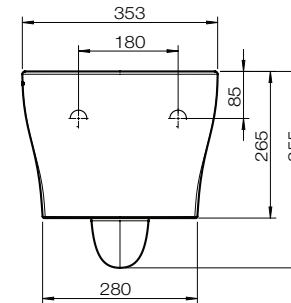
TECHNICAL DRAWING



PRODUCT DETAILS

Finishes	Pan	Gloss white ceramic
	Seat hinges & flush button	Chrome, Matt Black, Brushed Brass
Dimensions	Height	355 mm
	Width	353 mm
	Depth	500 mm
Material	Glazed ceramic	
Waste connection	Ø100 mm	
Flush pipe connection	Ø55 mm	
Wall fixings	180mm centres	
Weight	22.8 kg	
Warranty	10 years	
Codes		
Wrapover seat	Chrome fittings	TNE-207-CP
	Matt Black fittings	TNE-207-MN
	Brushed Brass fittings	TNE-207-BB
Slimline seat	Chrome fittings	TNE-307-CP
	Matt Black fittings	TNE-307-MN
	Brushed Brass fittings	TNE-307-BB

See separate datasheet for information on seat options and concealed cisterns



tissino

Lyncastle Road, Appleton Thorn, Warrington WA4 4SN

info@tissino.co.uk

+44 (0) 345 582 8000

tissino.co.uk



YOUR BATHROOM
MADE BEAUTIFUL

