



Doc M Sensorflow 21 Wall Hung Pack LH

Illustrated

S6986 Doc M contour 21 and Sensorflow 21 wall mounted left hand pack, sensor tap and TMV thermostatic valve, rimless WC pan and support brackets, Conceala water saving delay fill 4.5litre Sensorflow cistern, hinged support rail and toilet roll holder

Configuration options

Weights

S6986 66.41KG

Standards

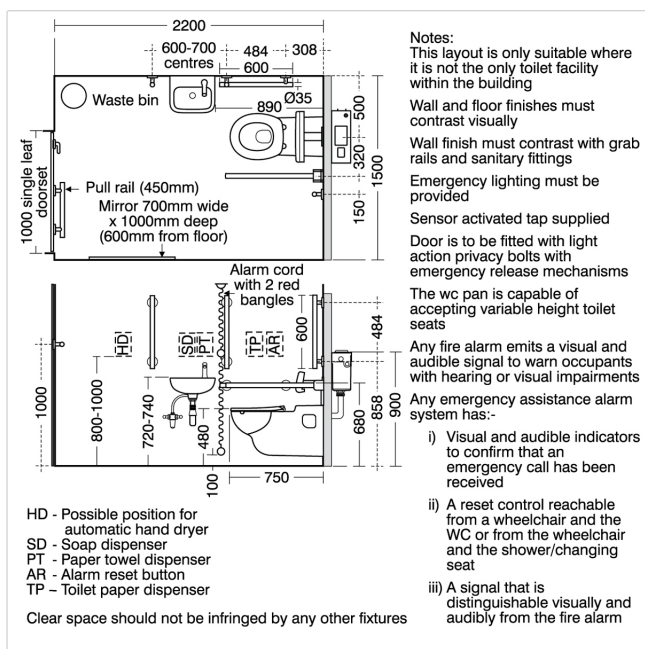
Vitreous china to BS 3402

Colours

Chromium plated (AA)

Special Notes

Doc M packs are available both right and left hand corner arrangement, illustrated is left hand arrangement. Supplied with layout drawings, detailing the fixing positions necessary for Doc M compliance



Frequently used applications

Education
Hotels
Public Building
Retail

Factory
Office
Pubs and Clubs
Sports and Leisure

Features

DocM
Water Saving

Accreditations

LANTAC

Armitage
Shanks

Tel: 0870 122 8822
Fax: 0870 122 8282
Email: info@idealspec.co.uk
Web: www.idealspec.co.uk

Ideal Standard (UK) Ltd. makes every effort to ensure that the information provided on its website is accurate. However, we cannot guarantee this, and accept no liability for any information or advice given via its website.

Powered by
Ideal Spec

Date created: 24/02/2013