



Doc M Contour 21 Standard Pack LH

Illustrated

S6984 Doc M Standard low level left hand corner pack, WC with spacer box low level cistern, grab rails, hinged support rail with toilet roll holder, seat no cover with retaining buffers

Configuration options

Weights

S6984 69.8KG

Standards

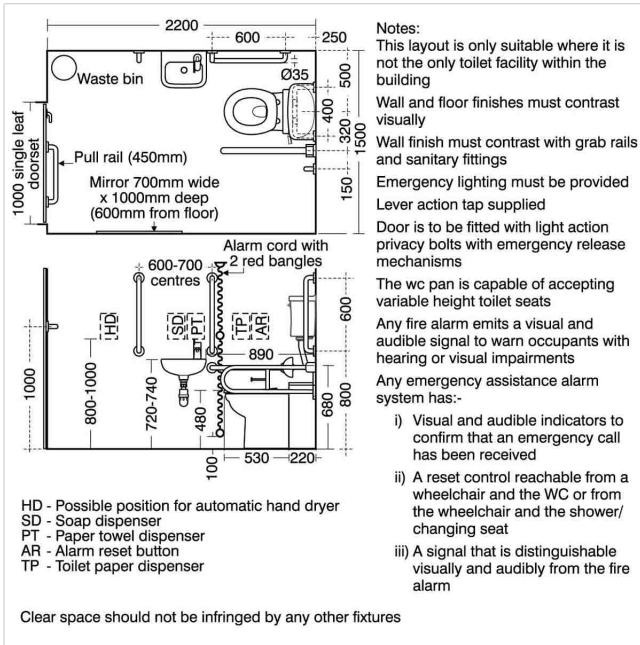
Vitreous china to BS 3402

Colours

Blue (LI)
White (AC)
Grey (LJ)
Charcoal (RN)

Special Notes

Doc M packs are available both right and left hand corner arrangement, illustrated is left hand arrangement.
Supplied with layout drawings, detailing the fixing positions necessary for Doc M compliance



Frequently used applications

Education	Factory
Hotels	Office
Public Building	Pubs and Clubs
Retail	Sports and Leisure

Features

DocM
Water Saving

Accreditations

LANTAC