

Doc M Contour 21 Peninsular Care Pack

Illustrated

S6959 Doc M Contour 21 peninsular care pack close coupled WC pan, water saving delay fill cistern with spatula lever, grab rails, 2 hinged arm support, toilet roll holder, seat no cover with retaining buffers, larger washbasin, copper tails on TMV3 mixer tap

Configuration options

Material

Vitreous China

Weights

S6959 66.41KG

Colours

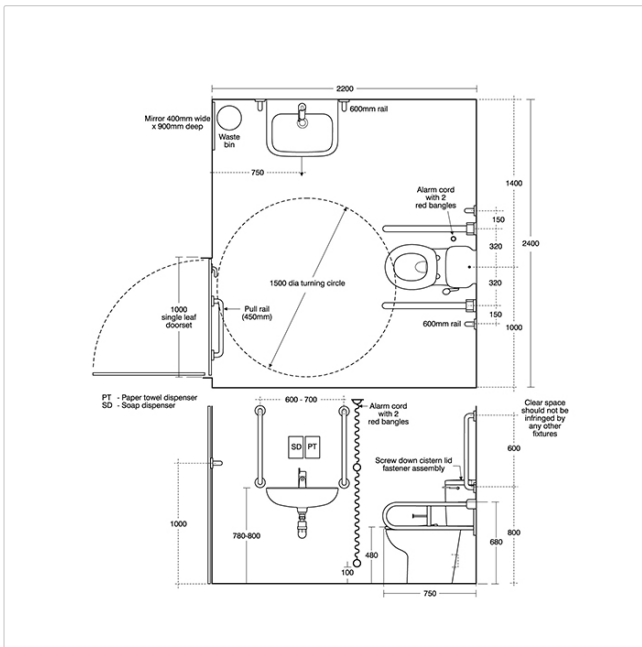
Stainless Steel (MY)
White (AC)
Blue (LI)

Standards

Vitreous china to BS 3402

Special Notes

Peninsular care packs require local authority approval as a public facility and should not be the only Doc M facility in a building



Frequently used applications

Education	Factory
General Healthcare	Hotels
Office	Public Building
Pubs and Clubs	Retail
Sports and Leisure	

Features

DocM
Special Care
Water Saving

Accreditations

LANTAC