



Doc M Contour 21 Ambulant Care Back To Wall Pack

Illustrated

S6957 Doc M Ambulant care WC pack with Contour 21 rimless back to wall WC, floor fixing kit, Conceala cistern with lever, grab rails, seat no cover with retaining buffers and plastic clothes hook

Configuration options

Material

Vitreous China

Weights

S6957 66.41KG

Colours

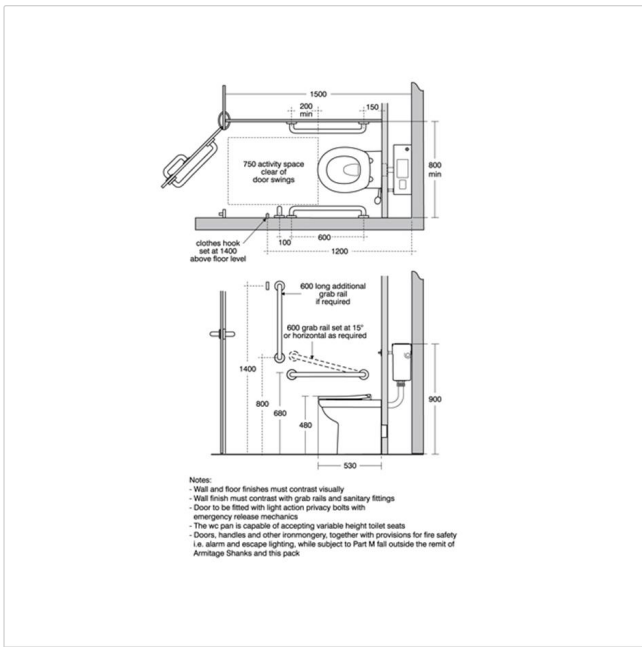
White (AC)
Blue (LI)
Stainless Steel (MY)
Grey (LJ)
Charcoal (RN)

Standards

Vitreous china to BS 3402

Special Notes

Levers can be fitted on left or right of cisterns. All washrooms must have at least one ambulant accessible wc compartment. Supplied with layout drawings, detailing the fixing positions necessary for Doc M compliance. See seat and rail pages for individual items colour options



Frequently used applications

Education
Hotels
Public Building
Retail

Factory
Office
Pubs and Clubs
Sports and Leisure

Features

DocM
Water Saving

Accreditations

LANTAC

Armitage
Shanks

Tel: 0870 122 8822
Fax: 0870 122 8282
Email: info@idealspec.co.uk
Web: www.idealspec.co.uk

Ideal Standard (UK) Ltd. makes every effort to ensure that the information provided on its website is accurate. However, we cannot guarantee this, and accept no liability for any information or advice given via its website.

Powered by
Ideal Spec

Date created:24/02/2013