



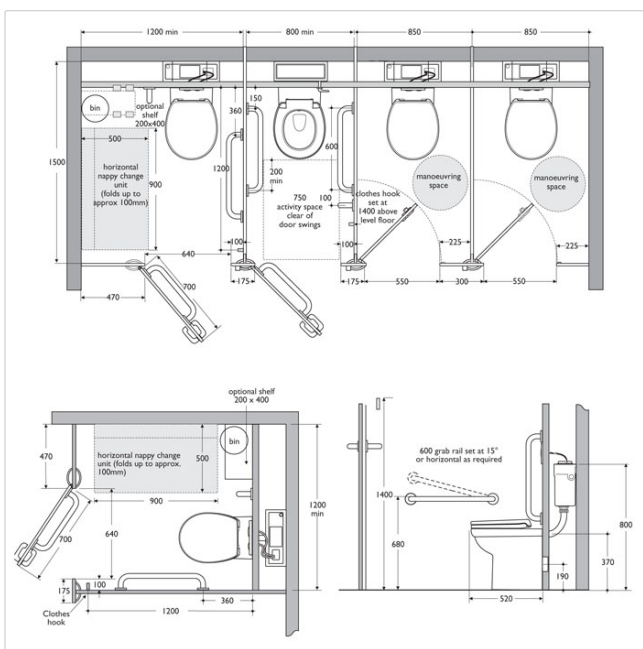
Contour 21 Back To Wall Rimless Standard Height WC Pan - Enlarged Cubicle

Illustrated

- S3056** Contour 21 back to wall rimless standard height WC pan with horizontal outlet
- S6454** Contour 21 grab rail straight 60cm long x 35mm diameter
- S6452** Contour 21 grab rail straight 45cm long x 35mm diameter
- S5093** Clothes hook screw to wall, plastic
- S3643** Conceala 2 cistern 4.5/3 Litre dual flush valve side supply and internal overflow, alternative height plastic flushbends
- S4065** Contour 21 seat and cover, top fixing hinges
- S4067** Contour 21 seat retaining buffers, white
- S4504** Contemporary flush plate dual flush, Armitage Shanks logo, Stainless Steel for Conceala 2 cisterns

Configuration options

- S4305** Panekta outlet Connector, finned pattern to convert horizontal outlet WCs to P trap
- S4300** Panekta outlet Connector, finned pattern to convert horizontal outlet WCs to S or turned P trap



Material

Vitreous China

Weights

- S3056 19.5KG
- S6454 1.96KG
- S6452 0.58KG
- S5093 1.76KG
- S3643 2.66KG
- S4065 2.7KG
- S4067 0.093KG
- S4504 0.366KG

Colours

White (01)

Standards

Vitreous china to BS 3402

Special Notes

Where four or more cubicles are provided in a washroom one of these must be an enlarged cubicle. This cubicle must be in addition to the ambulant disabled cubicle (see page 18:3:13) and must be a minimum of 1200mm wide. One horizontal and one vertical grab rail must be supplied to set around the WC. There must also be a space for a shelf and folding changing table, an outward opening door and closing/opening bar on the inside of the door. Supplied with layout drawings, detailing the fixing positions necessary for Doc M compliance. 600mm grab rail S6454 x 2 for room set 450mm grab rail S6452 for back of door

Designer

Robin Levien, RDI

Frequently used applications

- | | |
|-----------------|--------------------|
| Education | Factory |
| Hotels | Office |
| Public Building | Pubs and Clubs |
| Retail | Sports and Leisure |

Features

- DocM
- Water Saving

Accreditations

- WEPLS
- WTL

*Armitage
Shanks*

Tel: 0870 122 8822
Fax: 0870 122 8282
Email: info@idealspec.co.uk
Web: www.idealspec.co.uk

Ideal Standard (UK) Ltd. makes every effort to ensure that the information provided on its website is accurate. However, we cannot guarantee this, and accept no liability for any information or advice given via its website.

