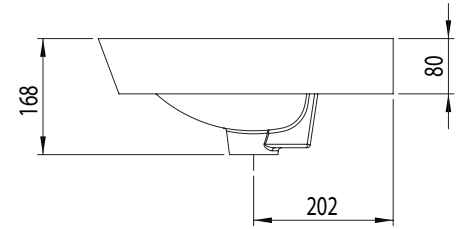
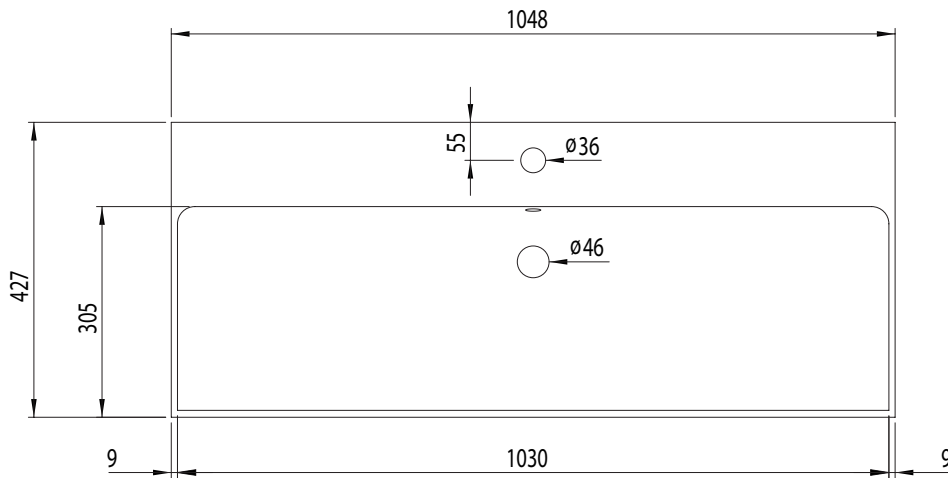


Technical Data Sheet

ROPER RHODES®

Scheme 800mm Ceramic Basin

Whats in the box: 1x SCH800C



Diagrams not to scale
All dimensions in mm
tolerance of +5mm

Materials

Basin: Ceramic

**Dimensions are subject to change, customers are advised to measure actual product before commencing installation.

***Fixing point dimensions are for guidance only/the positions of wall fixing must be checked when product is received.

FAQs

- | | |
|---|---------------------------------|
| Q: What is the maximum water depth of the basin? | A: 90mm up to the overflow. |
| Q: What is the internal depth? | A: The internal depth is 132mm. |
| Q: What's is the depth of the Tapledge? | A: The Tapledge is 122mm deep. |
| Q: What's the distance from the Taphole to the Basin Waste? | A: 147mm |

NOTE: Colours unique to Roper Rhodes - No RAL Code available