

BRISTAN

Java Basin Mixer Range

Fitting Instructions & Contents List



Please keep these instructions for future reference and request of replacement parts

Contents

Introduction	Page 3
Safety Notice	Page 3
Specification	Page 3
Installation Requirement Notes	Page 4
Installation	Page 4
	Page 5
	Page 6
Cleaning & Maintenance	

1. Introduction

Thank you for choosing Bristan, the UK's leading taps and showers expert. We have designed this product with your enjoyment in mind. To ensure that it works to its full potential, it needs to be fitted correctly. These fitting instructions have been created to give you all of the information you need and, if you need any further help, please do not hesitate to give us a call on 0330 026 6273.

2. Safety Note

Please read these instruction thoroughly and retain for future use.

All products manufactured and supplied by Bristan are safe provided they are installed correctly, used correctly and receive regular maintenance in accordance with these instructions.

These fittings need to be installed in accordance with and meet the requirements of the Water Supply (Water Fittings) Regulations 1999 and Scottish Byelaws 2004.



Before starting any installation please consider the following:

Prior to drilling into walls, check that there are no hidden electrical wires, cables or water supply pipes. This can be checked with the aid of an electronic detector.

If power tools are used do not forget to:

- Wear eye protection
- Unplug equipment after use

3. Specification

Operating pressure range (bar)	Min.	Max.
Basin Mixer - J BAS C & J BASNW C	0.2	5.0
Eco Click Basin Mixer - J EBAS C	0.2	5.0
Mini Basin Mixer - J SMBAS C	0.2	5.0
Miniature Basin Mixer - J MBAS C	0.3	5.0

Maximum static pressure – 10.0 bar

NOTE:- Nominally equal (balanced) inlet supply pressures are recommended for optimum performance.

Designed to comply with BS EN 200 for single taps / combination taps for water systems of type 1 and 2 general technical specifications and to be used within systems designed to BS 6700.

BS 6700 recommends the temperature of stored water should never exceed 65°C. A stored water temperature of 60°C is considered sufficient to meet all nominal requirements and will minimise the build up of lime scale in hard water areas.

4. Installation Requirement Notes:

IMPORTANT - PLEASE READ

This/these fitting/fittings needs/need to be installed in accordance with the following Installation Requirements and Notes (IRN) to ensure they meet the requirements of the Water Supply (Water Fittings) Regulations 1999 and the Scottish Byelaws 2004.

IRN R001

See text of entry for Installation Requirements or Notes.

IRN R006

This tap or combination tap is installed so that its base is no lower than the spillover level of the receiving vessel (for example, a sink or washbasin), a Type AUK3 air gap is achieved which permits installation of the tap in any premises where backflow protection up to Fluid Category 5 is required at the tap.

IRN R010

Schedule 2-15 (1)

Water supplies shall be reasonably balanced pressures from a common source (e.g. hot and cold supplies both from the same storage or both from a supply pipe). Where the fitting is supplied from unbalanced supplies (e.g. hot and cold supplies from separate sources) a 'Listed' single check valve or some other no less effective backflow prevention device shall be fitted immediately upstream of both hot and cold water inlets.

5. Installation

These taps are suitable for use at all supply pressures, however for optimum performance use both hot and cold water supplies which should be reasonably balanced.

Operating pressures: Min 0.2 bar, Max 5.0 bar
 Min 0.3 bar, Max 5.0 bar (J MBAS C)

Maximum static pressure: 10.0 Bar

If the fitting is installed at low pressure (tank fed), then the minimum distance from the underside of the nozzle to the cold water tank should be at least 2 metres* to ensure adequate performance.

This mixer should be installed in compliance with Water Regulations.

For further details please contact your local Water Authority.

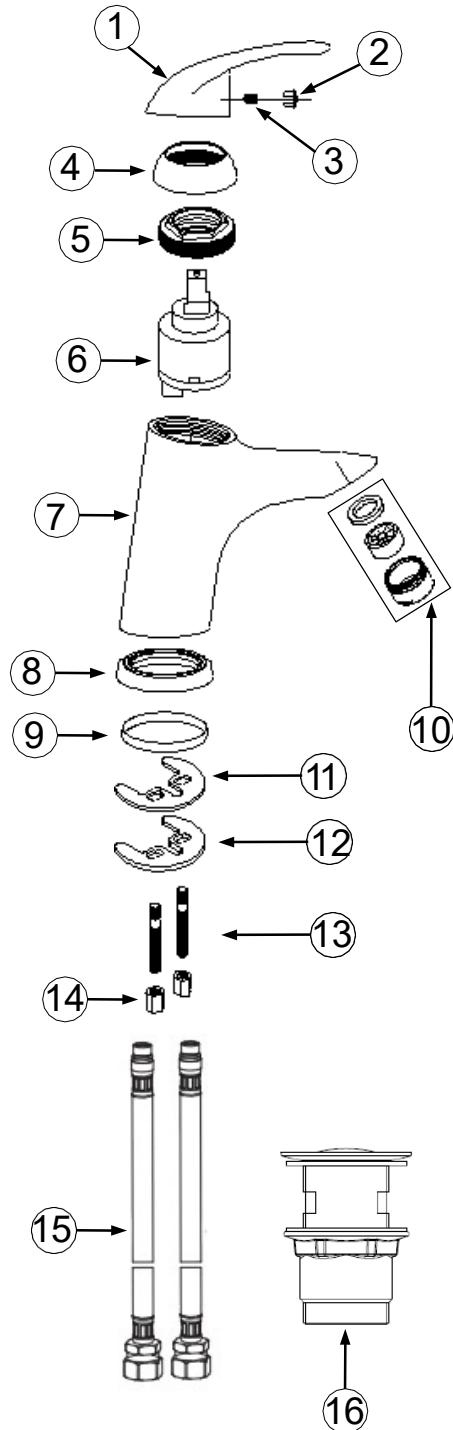
*J MBAS C will require a minimum distance of 3 metres to ensure adequate performance.

5. Installation Cont.

1. Identify all components are present, prior to starting installation.
2. Fit the mixer body to the basin using the 'C' plate fixing kit. The plinth (8) and washer (9) go between the fitting and the basin and the 'C' shaped rubber (11) and metal washers (12) on the underside of the basin. Secure into position using threaded rods (13) and nuts (14).
3. Fit the inlet connection pipes (15) by hand only (DO NOT OVERTIGHTEN) to the fitting and connect the hot and cold supplies.
4. If applicable fit the waste (16) using washers below and above the basin (supplied). It is recommended that a silicone sealant be applied to both sealing faces of the washers.
5. Fully open the mixer in the mid position, letting it run for a few minutes allowing time to check all joints and connections for leaks.
6. See page 6 for aftercare instructions.

5. Installation Cont.

Parts contents list	
1. Handle	x 1
2. Indice Cap	x 1
3. Grub Screw	x 1
4. Shroud	x 1
5. Retaining Nut	x 1
6. Cartridge	x 1
7. Mixer Body	x 1
8. Plinth	x 1
9. Anti Splash	x 1
10. Washer	x 1
11. 'C' Shaped Rubber Washer	x 1
12. 'C' Shaped Metal Washer	x 1
13. Threaded Rods	x 2
14. Fixing Nuts	x 2
15. Inlet Connection Pipes*	x 2
16. Clicker Waste**	x 1



* Copper inlet connection pipes supplied with J MBAS C
Flexible inlet connection pipes supplied with all other mixers
** Clicker waste not included with J BASNW C

6. Cleaning & Maintenance

Your fitting has a high quality finish and should be treated with care to preserve the visible surfaces. All finishes will wear if not cleaned correctly. The only safe way to clean your product is to wipe with a soft damp cloth. Stains can be removed using washing up liquid. All bathroom cleaning product (powders and liquids) will damage the surface of your fitting, even the non-scratch cleaners.

NOTE:- Never use abrasive detergents or disinfectants or those containing alcohol, hydrochloric or phosphoric acid.

We advise that your fitting is regularly serviced, particularly in hard water areas.

Maintenance

If the fitting begins to drip:

1. Turn off both water supplies to the tap / mixer.
2. Remove the indices cap, loosen grub screw with a hexagon key and pull off handle, unscrew shroud and retaining nut.
3. Remove Cartridge.
4. Clean or replace cartridge, clean and grease seal and refit.

Note: There are locating pins on the bottom of the cartridge that fit in holes inside the tap, to ensure it is fitted the correct way round.

5. Replace cartridge and all other components and turn on the water supply.
6. Contact our helpline should the problem persist.

Please Note: In the unlikely event that you find a part missing please contact our Customer Service Helpline on 0330 026 6273 or email enquire@bristan.com for immediate dispatch of part.

BRISTAN

This booklet covers all product codes

J BAS C

J BASNW C

J EBAS C

J SMBAS C

J MBAS C

Helpline

0330 026 6273

Bristan Group Limited

Birch Coppice Business Park, Dordon, Tamworth, Staffordshire B78 1SG

A Masco Company

Website: www.bristan.com

Telephone: 0330 026 6273 Email: enquire@bristan.com

At Bristan, we want to make things as easy as possible for our customers. That's why we offer solid guarantees on all our products, effective from the date of purchase, to give you peace of mind.

To start your free guarantee, simply scan the QR code and Register your product.

Alternatively, visit www.bristan.com/register to register your product via a computer.

For full guarantee terms and conditions visit, www.bristan.com/guarantees



We Know & We Care