

PRODUCT DATA SHEET



PRODUCT CODE
PRO330WV

RANGE
MPRO

DESCRIPTION
Bath 3H Filler Wall Mounted
Brushed Stainless Steel Effect

MIN. PRESSURE	1 Bar
MAX. PRESSURE	5 Bar

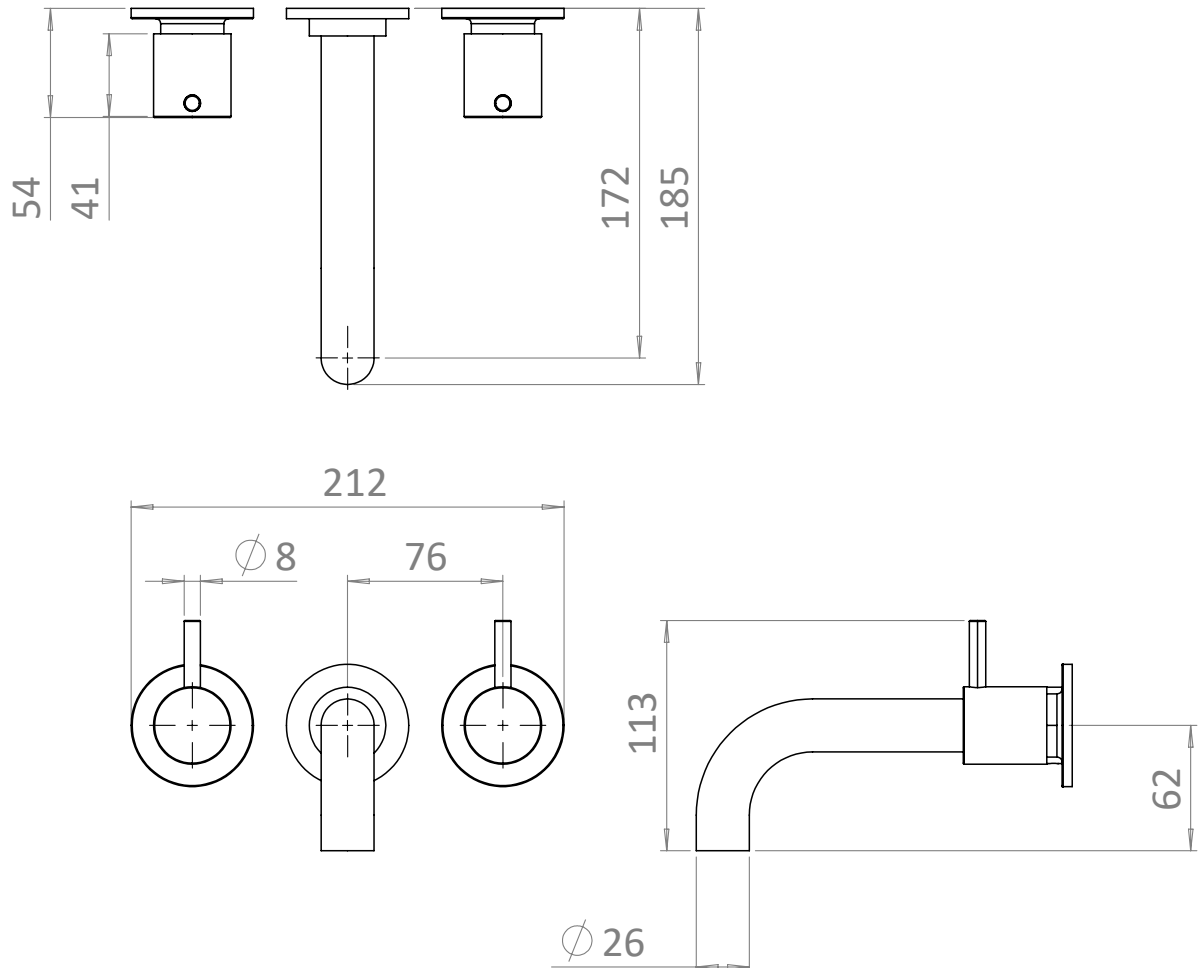
PRESSURE (BAR)		FLOWRATE
LOW	0.2	0.0
	0.5	0.0
HIGH	1	32
	2	47
	4	66
	5	75

COLOUR	Brushed Stainless Steel Effect
MATERIAL	Brass
FINISH APPLICATION	PVD
INSTALLATION TYPE	Wall-Mounted
APPROVALS	KIWA - 2001772
WARRANTY	15 Years

TECHNICAL DIMENSIONS

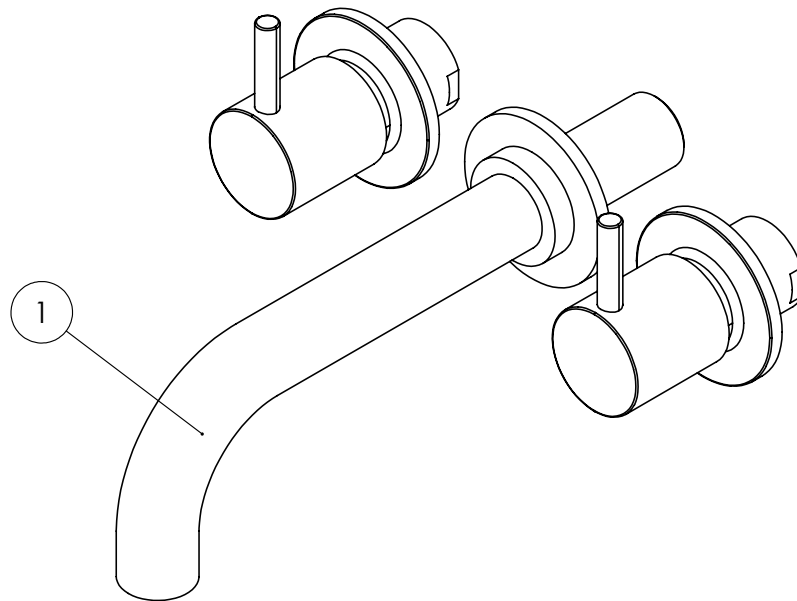
Dimensions in mm unless otherwise specified.

Tolerances (per material type) apply.



V10522

SPARES DIAGRAM



NUMBER	PART CODE	DESCRIPTION
1	PRO330SPOUTC	MPRO Bath Filler Spout - Chrome
	PRO330SPOUTF	MPRO Bath Filler Spout - Brushed Brass
	PRO330SPOUTM	MPRO Bath Filler Spout - Matt Black
	PRO330SPOUTV	MPRO Bath Filler Spout - Stainless Steel
	CGPRO130C	Cold Cartridge
	CGPRO130H	Hot Cartridge

Only the parts labelled are available as spares.

V10522