

PRODUCT DATA SHEET



PRODUCT CODE
TL416FSF

RANGE
3ONE6 Lever

DESCRIPTION
3ONE6 Lever Bath Floor Standing Filler
Stainless Brushed Brass Effect

WEBSITE LINK [Click Here](#)

CATEGORY	Brassware
WARRANTY DETAILS	15 Years
COLOUR	Brushed Brass Effect PVD
FINISH APPLICATION	PVD
PRIMARY MATERIAL	316 Stainless Steel
INSTALL TYPE	Floor Standing
PRODUCT WIDTH MM	153
PRODUCT HEIGHT MM	1018
PRODUCT NET WEIGHT KG	11.05
STANDARDS	BS EN 817:2008 : BS EN 113:2015

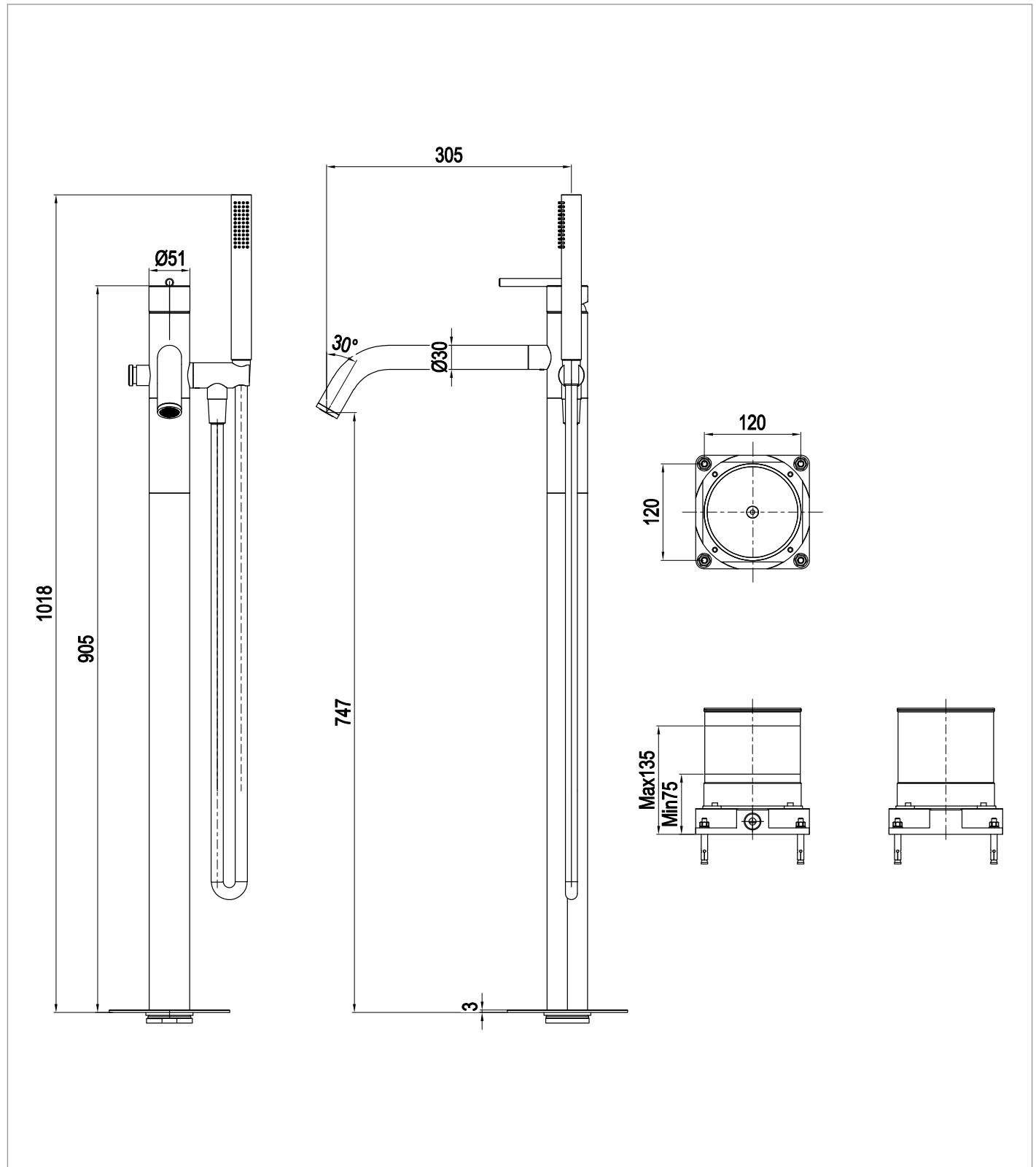
MINIMUM PRESSURE (BAR)	3
MAX WORKING PRESSURE (BAR)	5
NUMBER OF OUTLETS	2
NUMBER OF FUNCTIONS	1
HEADWORK	40mm Single lever ceramic cartridge
SPOUT PROJECTION	305
SWIVEL SPOUT	No
INLET CONNECTIONS THREAD	G1/2"
OUTLET CONNECTIONS THREAD	M24x1
FLOW REGULATOR	Cache full flow
WASTE INCLUDED	No
ANTI-SCALD	No
ENERGY SAVING	No
SHOWER HOSE & HANDSET ARE INCLUDED	Yes

PRESSURE (BAR)	0.2	0.5	1	2	3	4	5
PRIMARY FLOWRATE					19.15	22	24.7
HANDSET FLOWRATE			11.65	17.08	21.32	24.88	27.92
MASSAGE FLOW RATE							
AIR FLOW RATE							
WIRE FLOW RATE							
WATERFALL FLOW RATE							
MIST FLOW RATE							
HANDSPRAY FLOW RATE							

TECHNICAL DIMENSIONS

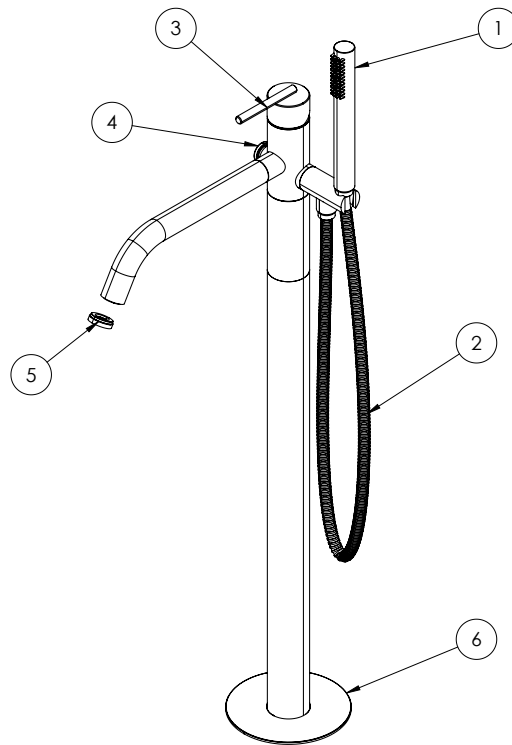
Dimensions in mm unless otherwise specified.

Tolerances (per material type) apply.



SPARES LIST

Only the parts labelled are available as spares.



NUMBER	PART CODE	DESCRIPTION
1	C10002405B-BB	TS963_416 Slate Hand Shower
	C10002411B	TS963_416 Brushed Brass Hand Shower
	C10002401B	TS963_416 Hand Shower
2	B20000109B	TS963_416 Slate Hose
	B20000121	TS963_416 Brushed Brass Hose
	B20000103	TS963_416 Hose
3	A045231702	TL416FST Lever
	A045231701	TL416FSF Lever
	A045231700	TL416FS Lever
4	A045230800	TS416FST Diverter
	A045230800	TS416FS Diverter
	A045230800	TS416FSF Diverter
5	A045231200	TS416Fx Aerator
6	A045231602	TS416FST Base Plate
	A045231601	TS416FSF Base Plate
	A045231600	TS416FS Base Plate