


ENDON[®]

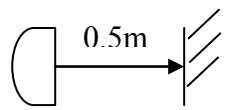
Table Lamps

INSTRUCTION MANUAL

Safety Warnings

- **Some parts are heavy, beware trapping fingers or dropping these parts.**
- **Do not plug into the mains until your lamp is fully assembled.**
- This product is only suitable for **indoor** use and connection to 240V~50Hz supply and is **not** suitable for a Bathroom location.
- The Table Lamp must be protected by a 3 amp fuse in the mains plug.
- **If the Class II, Double Insulated symbol  is on the Lamp then the Lamp does not require an Earth and Live or Neutral **must not be** connected to Earth.**
- If any modification is made it will invalidate the warranty and may render the product unsafe.
- If the mains cable becomes damaged it must only be replaced by a technically competent, qualified person.
- If the mains plug requires replacing use a plug approved to BS1363 with 3 Amp fuse and wire it up according to the diagrams below. Please note the marking for clear cable.
- Do not install bulbs with a greater wattage or different shape than specified on the label, as this could cause overheating and damage the fitting.
- If there is a "Minimum Distance" Label, please do not allow Flammable Materials to rest within *that* distance from the bulb(s). Never cover any lamp with any object or material.

Minimum Distance: This is the symbol which denotes this requirement.



Care Information

If your Table Lamp will not illuminate, please check the 3 amp fuse in the plug and ultimately check the relevant fuse in your Fuse Box.

If unsuccessful please consult your Retailer.

All Table Lamps for UK Market are designed for 240V ac, 50 Hz (220- 240V ac)

Please retain these instructions for future reference.

Switch off, remove plug and allow 10 minutes to cool before replacing bulb(s) or cleaning using only a dry cloth.

Assembly/ User Instructions

Please read these instructions carefully before fitting your new light and retain for reference.

Representative Diagram

Your Table Lamp may look different to this diagram but the essential steps in the text above are relevant to all lamps supplied with these instructions.

For Indoor use only

This pack contains:

1x Table Lamp Light Fitting
Appropriate shade(s) if required
Shade ring tool if necessary

Tools that may be required:

Allen key
Small electrical screw driver
Medium cross head screwdriver
Medium flat head screwdriver
Spanner

Assembly/ User Instructions Cont.

1. Completely unpack your Table Lamp, taking care to locate all parts including shades, bulbs, supplied tools.
2. Spread your Table Lamp out on a soft surface, allowing plenty of room to work.
3. If your table lamp requires any assembly, please refer to the additional information sheet at this stage. See representative diagram below where arms are aligned and locked and then the head fixed together. **Most Table Lamps only require a shade fitting, rather than the complex example.**
4. Fit the shade(s) by unscrewing shade ring(s) off lampholders, positioning the shade and replacing the shade ring; sometimes using a tool which is supplied. Shades also may be attached by rods through the shade which screw into part of the lampholder assembly. Other shades are fitted by screwing gently onto the lampholder directly or pushed on while easing the shade downwards.
5. Install the bulb(s). Do not install bulbs with a greater wattage or different shape than specified on the label. Energy saving replacement bulbs run much cooler so larger equivalent light outputs may be used.
6. Sometimes steps 4 & 5 must be done in reverse order so access is possible to fit the bulb.
7. Some Table Lamps may have "Strings" of beads, drops or decorative attachments which must be attached after the actual assembly of the Lamp, please refer to the additional sheet if this is the case.
8. Plug in and operate the switch to turn your Table Lamp on.

